

8

7

6

5

4

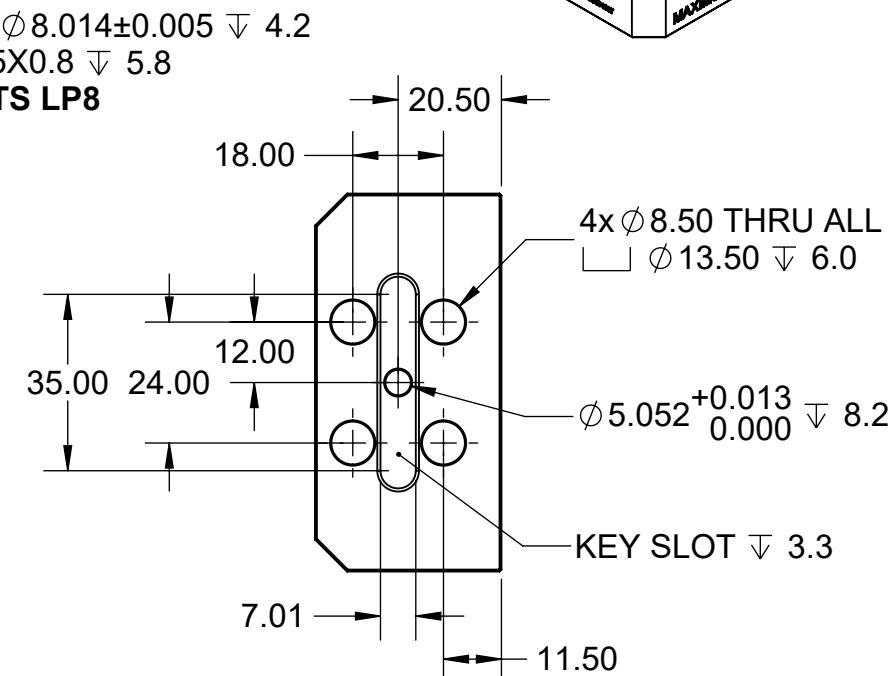
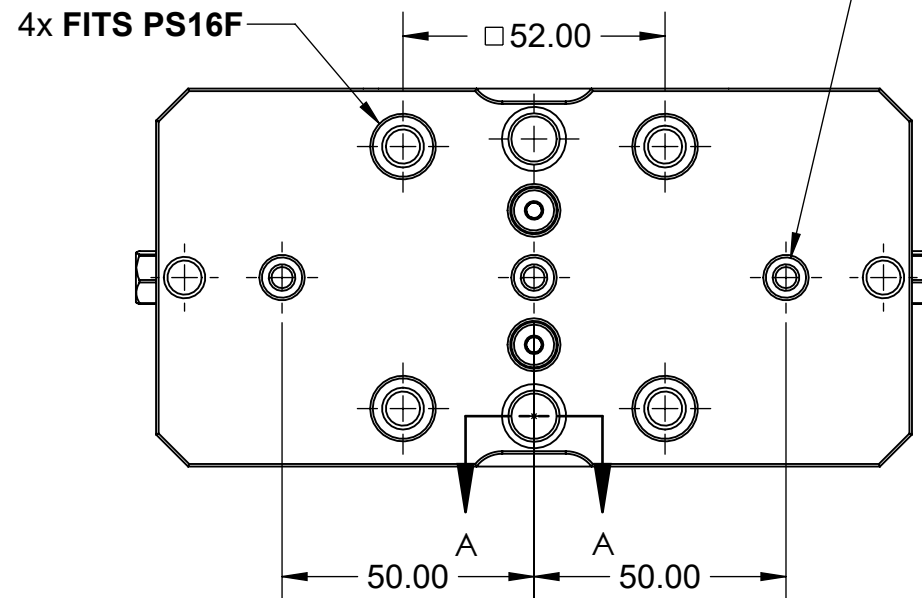
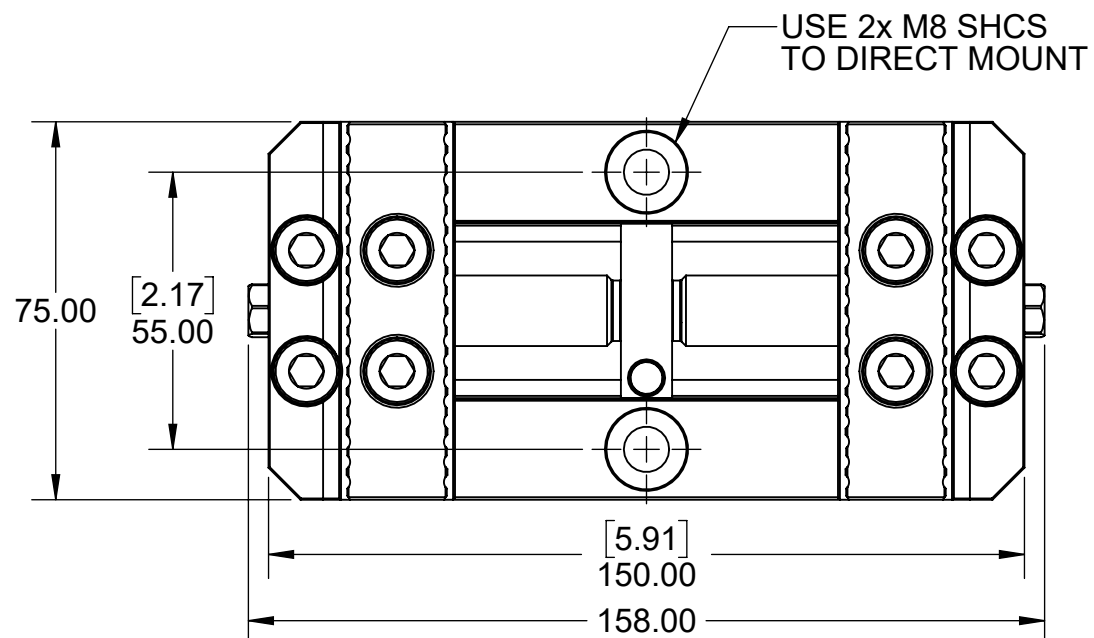
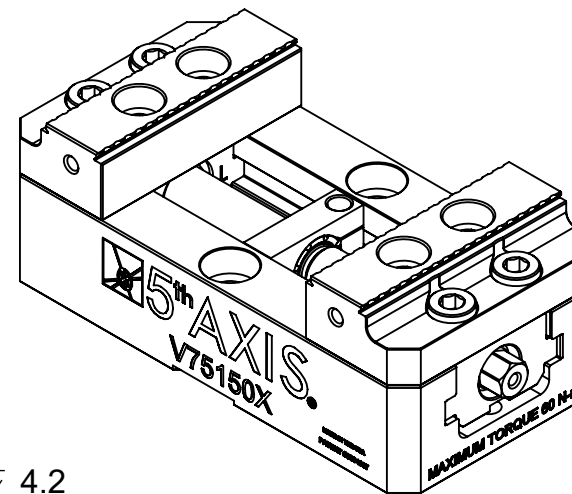
3

2

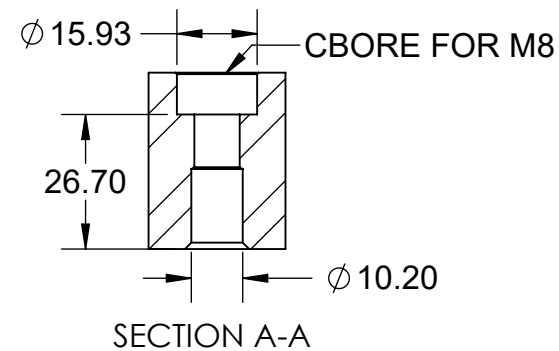
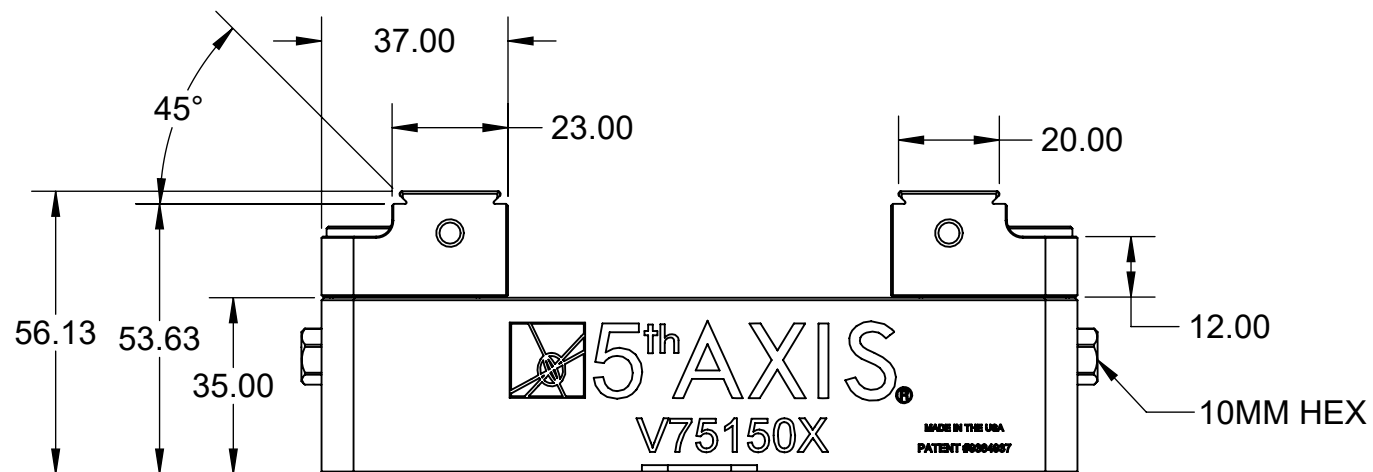
1

TECHNICAL DATA	V75150X
JAW WIDTH	2.95" (75.00mm)
BASE LENGTH	5.91" (150.00mm)
MAXIMUM TORQUE (JAW BOLT)	35 ft-lb (47.45 Nm)
CLAMPING FORCE	5000 lbf @ 45 ft-lb (22.24kN @ 61.01 Nm)
MAXIMUM TORQUE (LEADSCREW)	45 ft-lb (61.01 Nm)
MAXIMUM TORQUE (MOUNTING BOLT)	35 ft-lb (47.45 Nm)
SELF-CENTERING ACCURACY	± 0.0005" (± 12.7µm)

# V75150X



## JAW MOUNTING



<b>MILLIMETER</b> <small>DRAWN IN ACCORDANCE WITH ASME Y14.5-2009</small>  <small>WWW.5THAXIS.COM</small>  <small>7140 ENGINEER ROAD SAN DIEGO, CA 92111</small>  <small>P (858) 505-0432 F (858) 505-9344</small>	<b>TOLERANCES</b> <small>UNLESS OTHERWISE SPECIFIED</small> x ± 0.1    .xx ± 0.01 .x ± 0.05    .xxx ± 0.005 ANGULAR ± 0.5° <small>THIRD ANGLE PROJECTION</small>			
		<b>SMALL SELF-CENTERING VISE</b>		
		DESCRIPTION		
SIZE	PART NO.	<b>V75150X</b>		REV
<b>B</b>				<b>A</b>
DO NOT SCALE DRAWING		SCALE 2:3	WEIGHT:	SHEET 1 OF 3

8

7

6

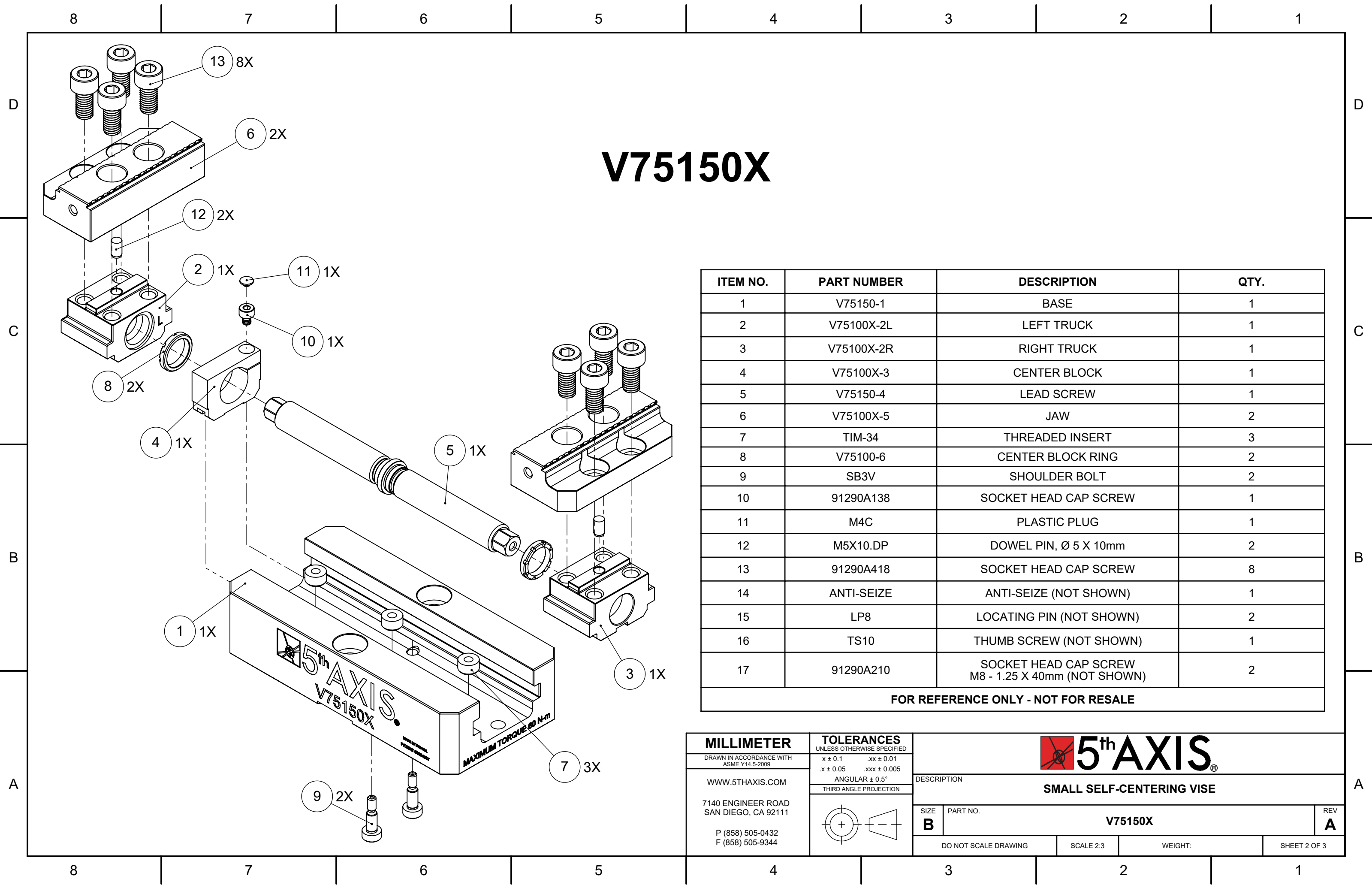
5

4

3

2

1



# V75150X

ITEM NO.	PART NUMBER	DESCRIPTION	QTY.
1	V75150-1	BASE	1
2	V75100X-2L	LEFT TRUCK	1
3	V75100X-2R	RIGHT TRUCK	1
4	V75100X-3	CENTER BLOCK	1
5	V75150-4	LEAD SCREW	1
6	V75100X-5	JAW	2
7	TIM-34	THREADED INSERT	3
8	V75100-6	CENTER BLOCK RING	2
9	SB3V	SHOULDER BOLT	2
10	91290A138	SOCKET HEAD CAP SCREW	1
11	M4C	PLASTIC PLUG	1
12	M5X10.DP	DOWEL PIN, Ø 5 X 10mm	2
13	91290A418	SOCKET HEAD CAP SCREW	8
14	ANTI-SEIZE	ANTI-SEIZE (NOT SHOWN)	1
15	LP8	LOCATING PIN (NOT SHOWN)	2
16	TS10	THUMB SCREW (NOT SHOWN)	1
17	91290A210	SOCKET HEAD CAP SCREW M8 - 1.25 X 40mm (NOT SHOWN)	2

**FOR REFERENCE ONLY - NOT FOR RESALE**

<b>MILLIMETER</b> <small>DRAWN IN ACCORDANCE WITH ASME Y14.5-2009</small>  WWW.5THAXIS.COM  7140 ENGINEER ROAD SAN DIEGO, CA 92111  P (858) 505-0432 F (858) 505-9344	<b>TOLERANCES</b> <small>UNLESS OTHERWISE SPECIFIED</small> x ± 0.1    .xx ± 0.01 .x ± 0.05    .xxx ± 0.005 ANGULAR ± 0.5° THIRD ANGLE PROJECTION			
		<b>SMALL SELF-CENTERING VISE</b>		
DESCRIPTION		SIZE <b>B</b>	PART NO. <b>V75150X</b>	REV <b>A</b>
DO NOT SCALE DRAWING		SCALE 2:3	WEIGHT:	SHEET 2 OF 3

8

7

6

5

4

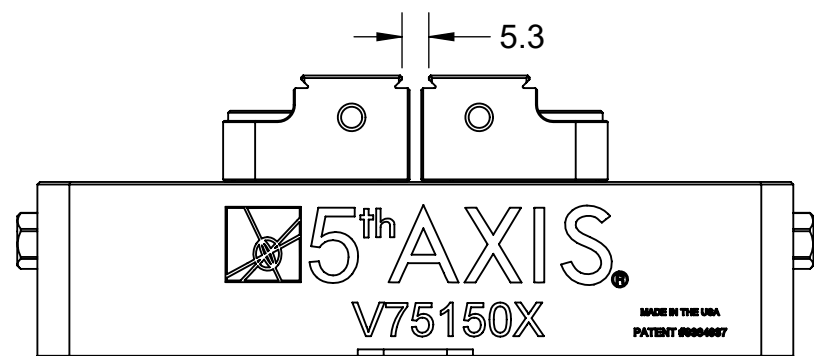
3

2

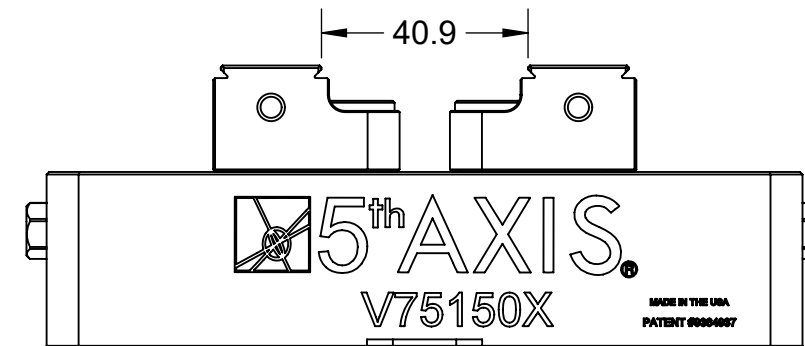
1

**NOTE:** USING DOVETAIL ALLOWS VISE TO CLAMP LARGER PART.  
BELOW CLAMPING RANGE ONLY SHOWS THE CAPABILITY OF THE GRIPPER TEETH.

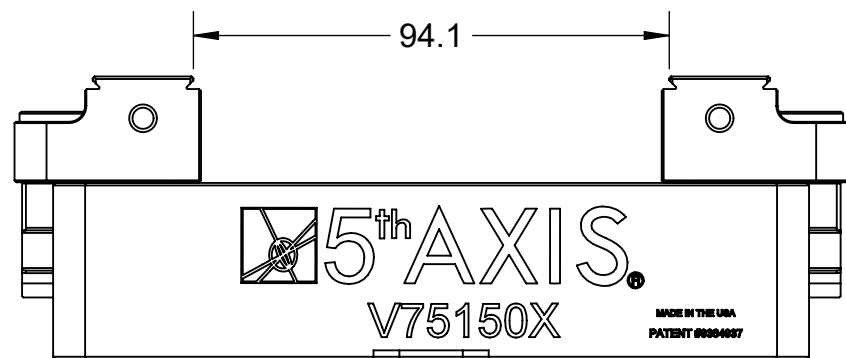
# V75150X



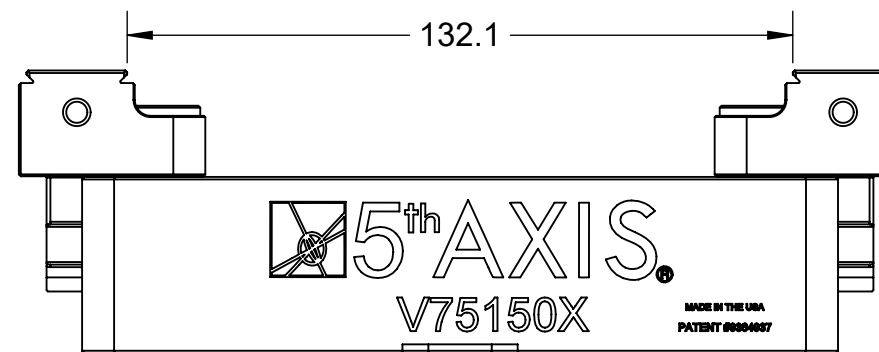
FORWARD JAWS (MINIMUM CLAMPING RANGE)



REVERSE JAWS (MINIMUM CLAMPING RANGE)



FORWARD JAWS (MAXIMUM CLAMPING RANGE)



REVERSE JAWS (MAXIMUM CLAMPING RANGE)

### MILLIMETER

DRAWN IN ACCORDANCE WITH  
ASME Y14.5-2009

WWW.5THAXIS.COM

7140 ENGINEER ROAD  
SAN DIEGO, CA 92111

P (858) 505-0432  
F (858) 505-9344

### TOLERANCES

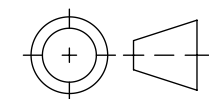
UNLESS OTHERWISE SPECIFIED

x ± 0.1    .xx ± 0.01

.x ± 0.05    .xxx ± 0.005

ANGULAR ± 0.5°

THIRD ANGLE PROJECTION



DESCRIPTION

**SMALL SELF-CENTERING VISE**

SIZE

**B**

PART NO.

**V75150X**

REV

**A**

DO NOT SCALE DRAWING

SCALE 2:3

WEIGHT:

SHEET 3 OF 3

8

7

6

5

4

3

2

1